



SAFETY ALERT



Incident Title:

Fire Extinguisher Failure During Digger Fire!

Date of Incident:

DATE: 23/07/2016

Incident Description and Details:

Recently, a Grapple Digger was working in the hatch of a log vessel when a battery/electrical fault in the engine bay caused a fire to start. The Digger operator immediately used the small, personal fire extinguisher from inside the cab on the fire but it was not enough to put the fire out. The operator then tried to use the larger, externally mounted, Fire Extinguisher but found it would not work. He then grabbed the extinguisher from the other digger in the neighbouring hatch but this extinguisher also didn't work. The digger had to be lifted out of the hold and put onto the wharf and the fire was put out there.

Recommendations / Lessons:

Taking proper care of your fire extinguisher is crucial! **Monthly** fire extinguisher inspections should be carried out to help make sure they are ready for use when the time comes to use them.

- 1. Ensure Easy Access:** Make sure the extinguisher is in its proper spot, mounted, visible and easy to access.
- 2. Check the Seals:** Look over the tamper seal and safety pin to make sure they are intact.
- 3. Check the Pressure:** Check to make sure that the gauge's needle indicates proper pressure.
- 4. Look for Physical Damage:** Signs of damage, such as corrosion, leakage or a clogged nozzle, may mean it's time to replace the extinguisher.
- 5. Give them a Shake:** Give dry chemical fire extinguishers a shake to prevent the powder from settling on the bottom and packing.

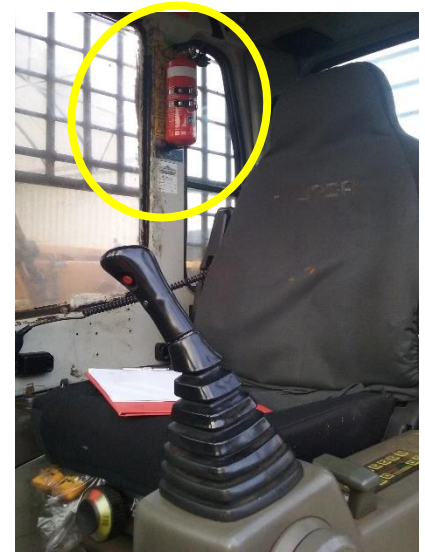
Having a fire extinguisher that is not properly maintained can be extremely dangerous. If you take proper care of your fire extinguisher, it will be able to protect you in the event of a fire.

Contact Person:

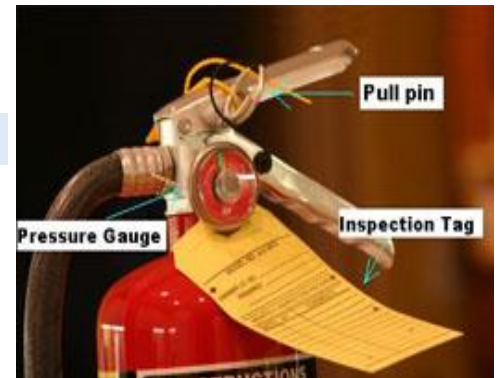
Your Local Health & Safety Business Partner

Date of Incident Alert issue: 15/08/2016

Alert Number: C3-00018



Ensure Extinguisher is mounted, visible and easy to access!



Look for physical damage and ensure that seals and pins are intact.

The tag should be clipped in the box that corresponds to the month and the year it was inspected
 Note: The tag can cover up to 8 years of inspections



The tag should also be clipped in the box that corresponds to the year of manufacture or the year in which the extinguisher was last hydrostatically tested

