

# SAFE+

## General Overview

A performance improvement toolkit to help reduce work-related injuries, illness and fatalities by providing independent qualified assessments and advisory services to businesses.

MAKING HEALTH AND SAFETY WORK

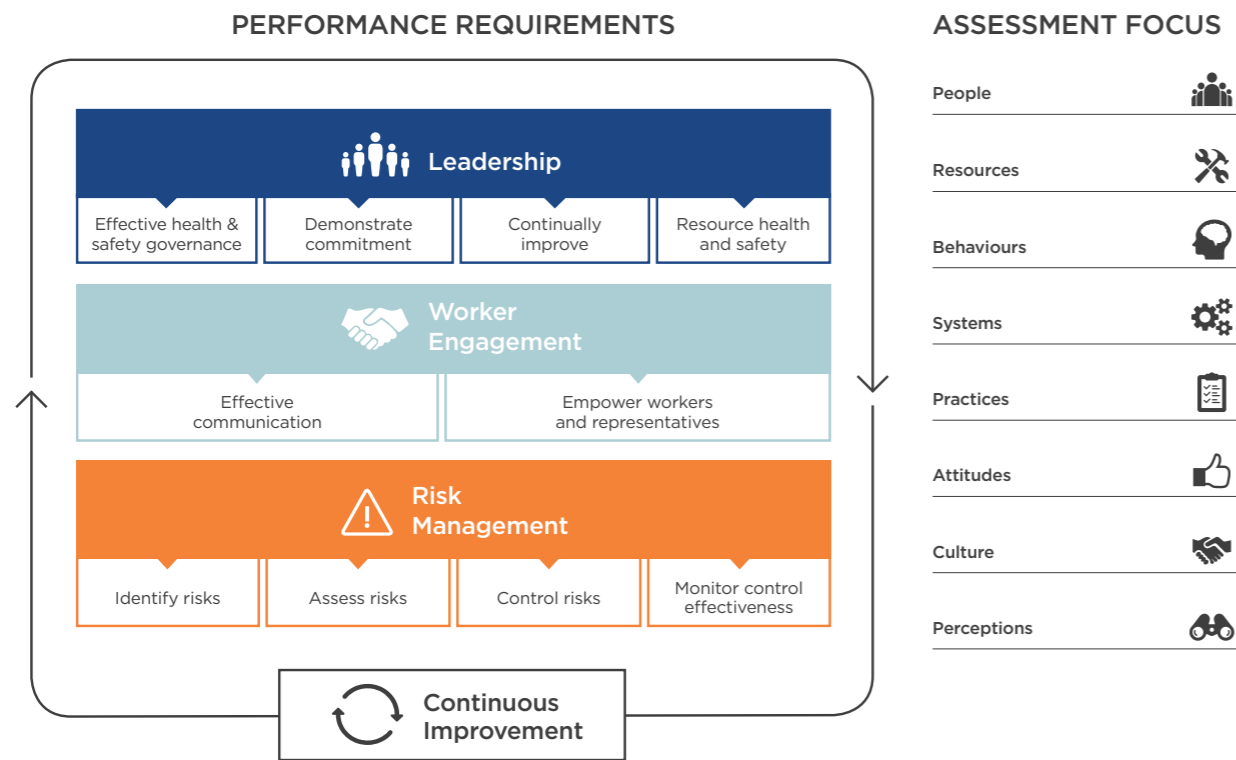
### WHO IS IT FOR

Designed for all sectors



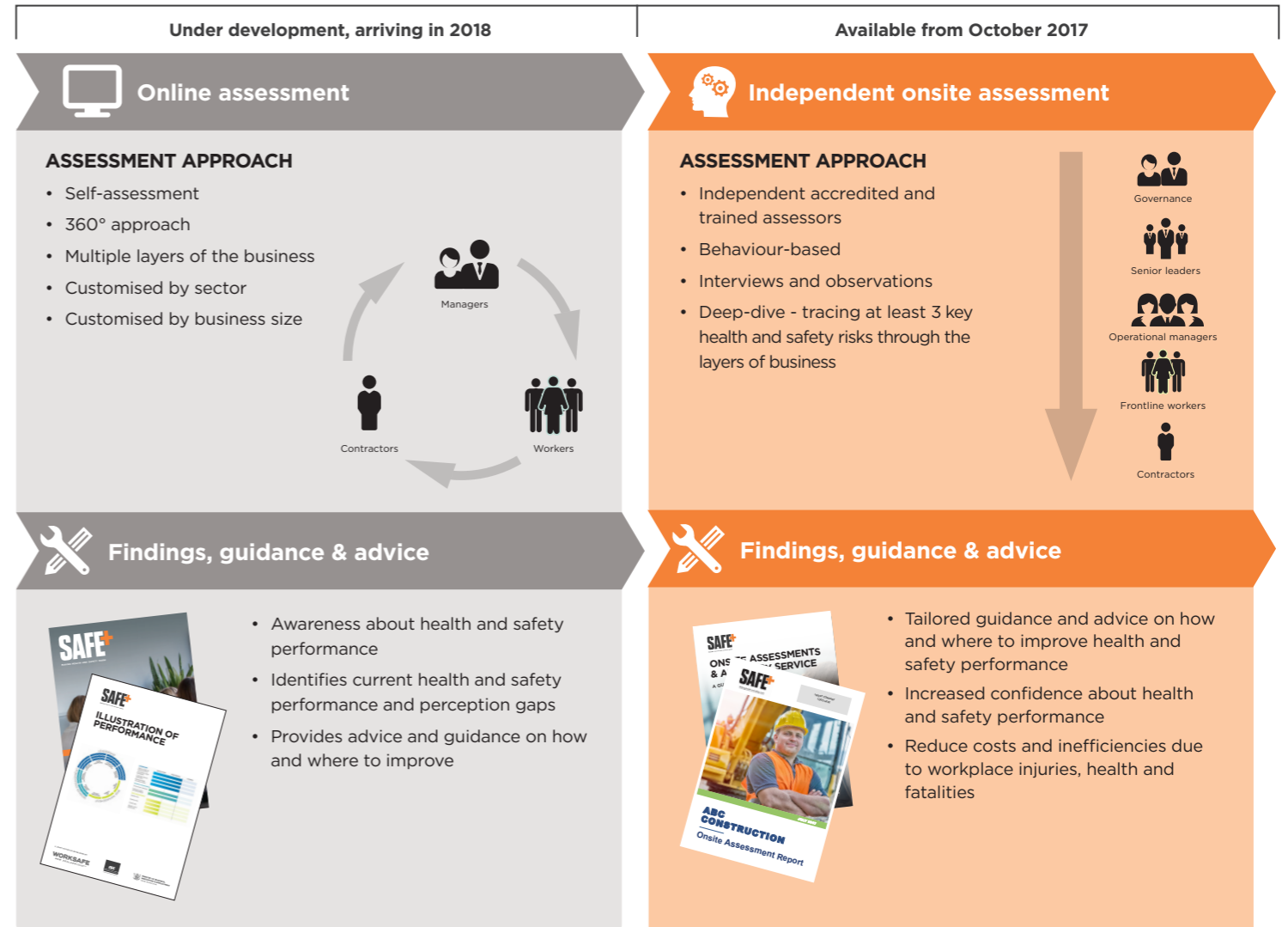
### PERFORMANCE REQUIREMENTS

There are ten performance requirements across three key themes - Leadership, Worker Engagement and Risk Management. These requirements have been developed and tested with New Zealand workers.



### HOW IT WORKS

Assessment Process: choose one or both



### MEASURING PERFORMANCE

A three level maturity scale is used for each performance requirement to help determine current health and safety strengths and areas for improvement and support ongoing performance improvement.

#### DEVELOPING (NOT MEETING THE STANDARD)

The business knows it needs to improve but has not identified what to improve or how. Likely to rely on PPE, administrative controls and informal processes and may respond reactively to address issues.

#### PERFORMING

Health & safety performance is reviewed and monitored to support continual improvement. Workers are engaged and empowered. Risks are identified and actions are taken to address root causes.

#### LEADING

Health & safety is integral to core business activities. There is a sense of ownership from workers at all levels and workers are supported to lead initiatives. The business takes a leadership role in industry to help lift performance.

Email [starrating@worksafe.govt.nz](mailto:starrating@worksafe.govt.nz)

www.safeplus.nz

A JOINT INITIATIVE DEVELOPED BY

**WORKSAFE**



**MINISTRY OF BUSINESS, INNOVATION & EMPLOYMENT**  
HĪKINA WHAKATUTUKI

Date: SEPT 2017