

FACT SHEET

VIOLENCE AT WORK: CUSTOMER SERVICE AREAS

Violence can take many forms – ranging from physical assault and verbal abuse to intimidation and low-level threatening behaviour. Violence or threats of violence are never acceptable. This fact sheet explains how a person conducting a business or undertaking (PCBU) that is office-based can prevent or deal with violence at work.

So far as is reasonably practicable, you must ensure the health and safety of workers, and ensure that others are not put at risk from your work.

Violence or threats of violence at the workplace can come from clients, co-workers or even a worker’s family members or acquaintances. You can follow the PLAN-DO-CHECK-ACT approach to work out whether violence is a risk to your workers or others, and if so, how you could prevent or deal with it.

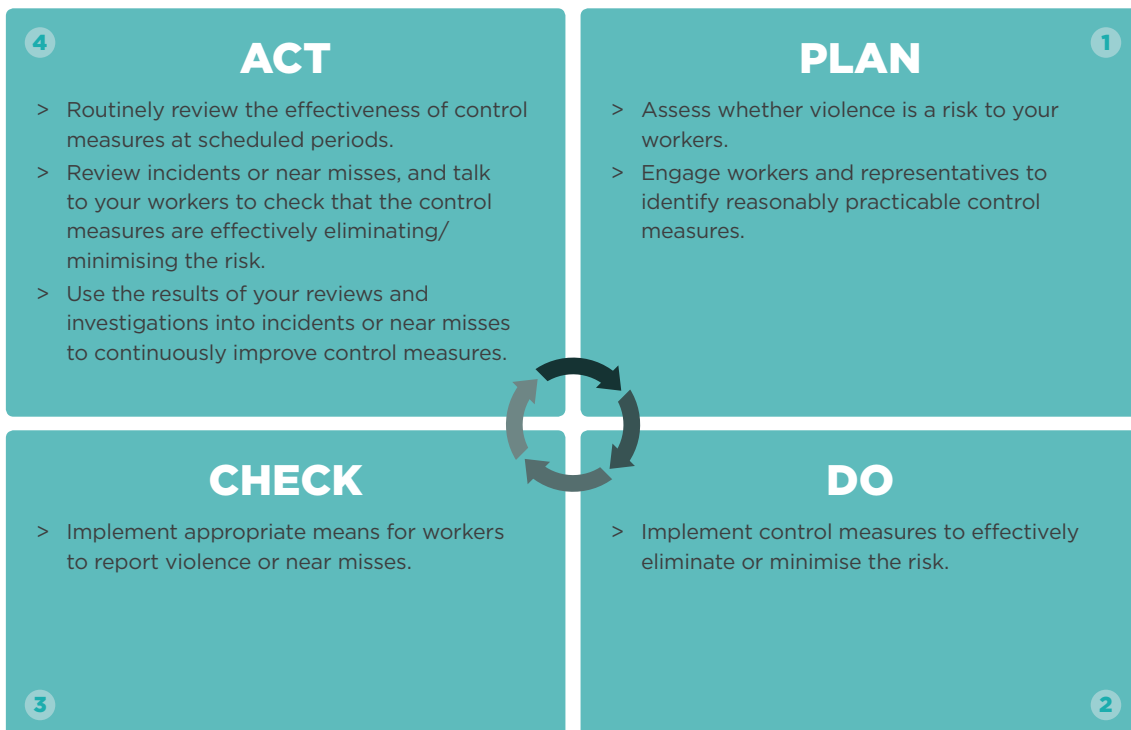


Figure 1: The PLAN-DO-CHECK-ACT way to manage risks

PLAN – ASSESS RISK AND IDENTIFY CONTROL MEASURES

ASSESS RISK

Risk has two components – the likelihood that it will occur and the potential consequences (degree of harm) if it happens. To manage risk, you can reduce the chances of it occurring or reduce how serious the potential harm is if it does occur, or ideally both.

For risks that have unacceptable outcomes (such as the potential for a person to die or be seriously harmed as a result of violence), even if they have a low likelihood of occurring you should look at credible worst case scenarios.

To work out if violence may be a risk to your workers or others:

- > Look at previous incidents in your organisation including threats of violence. Any threatening behaviour (including written and verbal threats, such as on social media) should be taken seriously.
- > Ask your workers about any experiences they have had or heard about – you must engage with your workers when identifying risks.
- > Find out what similar organisations have experienced.

If you share premises with other organisations/businesses, you must consult, cooperate and coordinate with these PCBUs so that you can all meet your health and safety duties.

You must engage with your workers about the ways to eliminate or minimise risks.

IDENTIFY CONTROL MEASURES

You must eliminate risks that arise from your work so far as is reasonably practicable.

If you can't eliminate the risk, you must minimise it so far as is reasonably practicable.

- > Reasonably practicable means you do what is reasonable in your circumstances to ensure health and safety (eg what a reasonable person in your position would be expected to know and do) – you do what is reasonable to first try to eliminate the risk. If the risk can't be eliminated, then you must minimise it.
- > Just because something is possible to do, doesn't mean it is reasonably practicable in the circumstances. However, cost can only be used as a reason to not do something when it is grossly disproportionate to the risk.

For more information, see WorkSafe's fact sheet *Reasonably Practicable*.

Figure 2 outlines possible control measures split into five types:

- > architectural/layout
- > policies and procedures
- > training
- > emergency and
- > other security measures.

It is likely that you will need control measures from all five types.

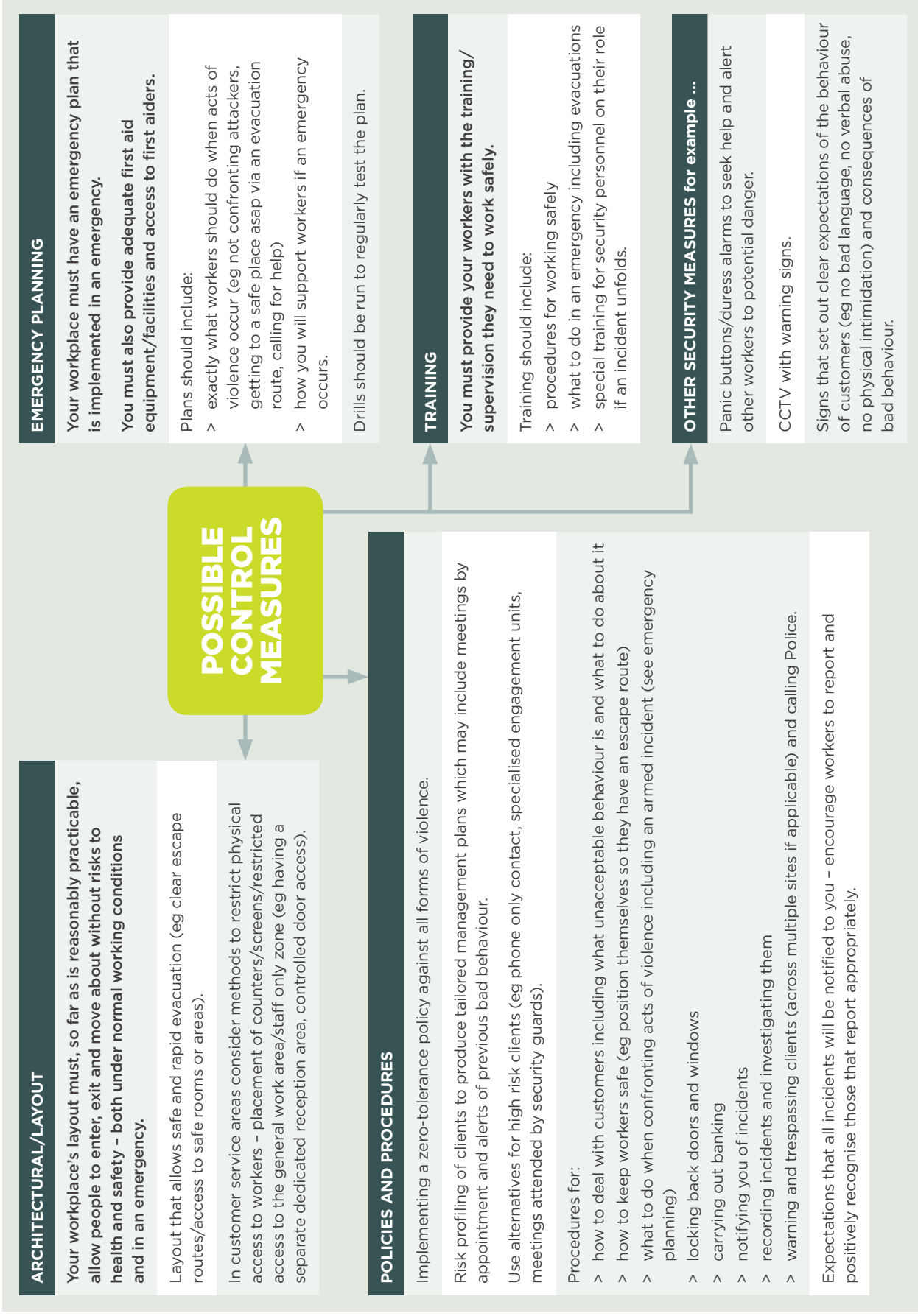


Figure 2: Possible control measures. Mandatory requirements are in bold. The control measures used should depend on the findings from your risk assessment.

Some control measures will be common for all offices (eg emergency planning, training, zero tolerance for violence), while others may only be appropriate for certain workplaces or work (eg panic buttons when working alone with a client).

It is likely that you will need different types of control measures that work together to achieve your goal. For example, for workers to evacuate safely, you will need a clear evacuation route, a safe place to evacuate to, an emergency plan and workers trained on when/how to evacuate.

Choose the control measures that effectively eliminate or minimise the risk. It's better to protect your workers and others from violent acts occurring, rather than dealing with the aftermath.

Give preference to control measures that protect multiple people at once.

DO - IMPLEMENT CONTROL MEASURES

As soon as possible after you have made a decision, implement the control measures and ensure your workers know about them.

CHECK - MONITOR PERFORMANCE OF CONTROL MEASURES

Implement the means for incidents and near misses to be reported. Encourage workers to report incidents or near misses.

ACT - TAKE ACTION ON LESSONS LEARNT

Routinely review the effectiveness of your control measures at scheduled periods. Talk to your workers about how the control measures are working, and review the reports of incidents or near misses to check if your control measures are effectively eliminating/minimising the risk and if your risk level is changing.

Keep aware of any increases of violence in your area that may require you to re-look at your control measures, by talking to other similar organisations or paying attention to media reports.

Use the results of your reviews, investigations into reports of incidents and near misses, and the outcomes of your emergency drills to continually improve control measures.

For more information about dealing with the risk of robbery, see WorkSafe's *Guidelines for the Safety of Staff from the Threat of Robbery*.

For more information about managing work risks, see WorkSafe's fact sheet *A Way to Identify, Assess and Manage Work Risks* and the website: www.business.govt.nz/worksafe/hswa/working-smarter

See WorkSafe's interpretive guidelines on *General Risk and Workplace Management* for workplace, training/supervision, first aid and emergency plan requirements.

A further source of information is the [Protective Security Requirements](#) (PSR). While the PSR was introduced as a protective security framework for mandated government agencies, it can be adapted and used as security best practice by any business.

PUBLISHED: DECEMBER 2016. CURRENT UNTIL REVIEW IN 2018.